

T11 5,800 US GALLONS

US Intermodal 407 Tank

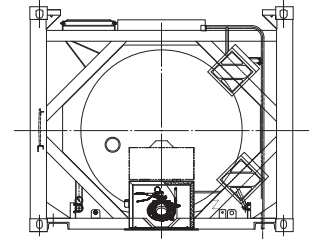
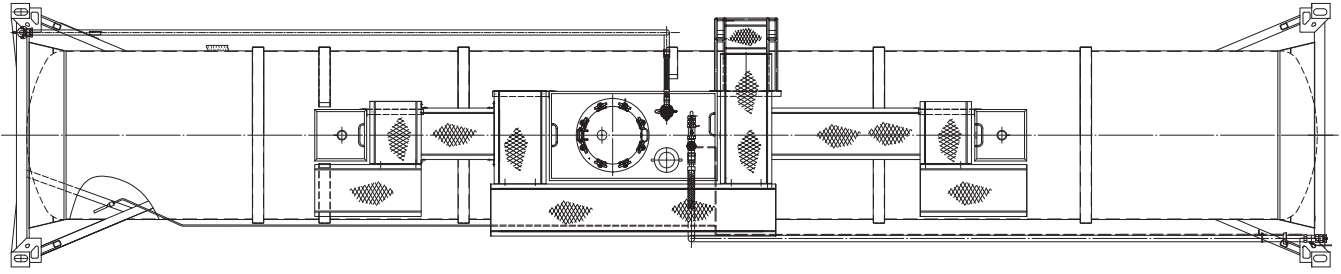


5,800 US GALLONS

**EXSIF**  
WORLDWIDE



A Marmon Group/Berkshire Hathaway Company



# T11 5,800 US GALLONS

## US Intermodal 407 Tank

### General Specification

Dimensions	ft-in	mm	Weights	lbs	kgs	Steam Heating System	
Length	40' 0"	12,192	Tare	8,708	3,950	<b>Walkway</b>	4 off runs producing an effective heating area of 68 ft <sup>2</sup> (6.3m <sup>2</sup> ). 145 psi (10 Bar) max. working pressure. Front inlet / outlet 1" Aeroquip ISO A couplings. Rear 1 1/2" NPT Inlet / 1/2" NPT steam trap outlet.
Width	8' 0"	2,438	Max Payload	66,249	30,050		
Height	6' 10"	2,082	<b>Fittings</b>			<b>Insulation</b>	50mm Glasswool with outer cladding of white GRP.
<b>Capacity</b>	<b>US Gallons</b>	<b>Liters</b>	Manlid				
<b>Shell Material</b>	316L Stainless Steel		Air Line	500mm, fully hinged with 8 fixings. Integrated 3" NPT cleaning port.		<b>Approvals</b>	UN Portable tank (T11) CFR49, IMDG, ADR/RID, TIR, CSC, TC, AAR, FRA.
<b>Barrel/Head Thickness</b>	0.173"/0.181" (4.4/4.6mm)		Bottom Outlet	1 1/2" stainless steel ball valve with NPT top connection or front ground level Chicago RAM13 coupling.			
<b>Pressures</b>	Working = 58.0 psi (4 Bar) Test = 87.0 psi (6 Bar) Vacuum = 5.9 psi (0.4 Bar)		Vapor Recovery	3" 45° stainless steel hydraulically operated footvalve with a 3" butterfly valve terminating with a 3" Camlock coupling. Remote closure system with a fusible link fitted.			
<b>Design Temp</b>	266°F (130°C)		Safety Relief Valve	2" 3-way valve with remote hydraulic ground level operation. 2" Camlock couplings on top and next to bottom outlet.			
<b>Design Code</b>	ASME VIII Division 1 where applicable		Cleaning Port	4" Girard DOT 407 pressure only valve set at 63 psi (4.4 bar).			
<b>External Finish</b>	3 coat system with Zinc rich primer.		Thermometer	3 off 3" NPT cleaning ports located at front, middle and rear.			
<b>Internal Finish</b>	Cold rolled ASTM 2B, interior acid cleaned washed and dried.			Surface type gauge reading -40°F to +320°F (-40°C/+160°C).			

Note: The above information is an average representation of technical data. Please consult your EXSIF Worldwide representative for more specific data.

EXSIF Worldwide, Inc.  
Corkstraat 46  
Rotterdam 3047 AC  
The Netherlands  
Tel: + 31-10-240-40-20  
Fax: + 31-10-240-40-29  
email: sales.europe@exsif.com

EXSIF Worldwide, Inc.  
1225 North Loop West, Suite 300  
Houston, TX 77008  
United States  
Tel: + 1-713-869-9988  
Fax: + 1-713-869-7827  
email: sales.americas@exsif.com

EXSIF Worldwide, Inc.  
80 Anson Road  
#24-01A Fuji Xerox Towers  
Singapore 079907  
Tel: + 65-6224-2633  
Fax: + 65-6224-2634  
email: sales.asia@exsif.com

EXSIF Worldwide, Inc.  
Shanghai Kerry Center  
Unit 1502  
1515 West Nanjing Road  
Shanghai 200040  
People's Republic of China  
Tel: + 86-21-6289-1230  
Fax: + 86-21-6289-1223  
email: sales.china@exsif.com



Visit our web site [www.exsif.com](http://www.exsif.com)

Headquarters: EXSIF Worldwide, Inc., 2700 Westchester Avenue, Suite 400, Purchase, NY 10577, United States.  
Tel: + 1-914-848-4200 Fax: + 1-914-848-4201 Contact: [contact@exsif.com](mailto:contact@exsif.com)