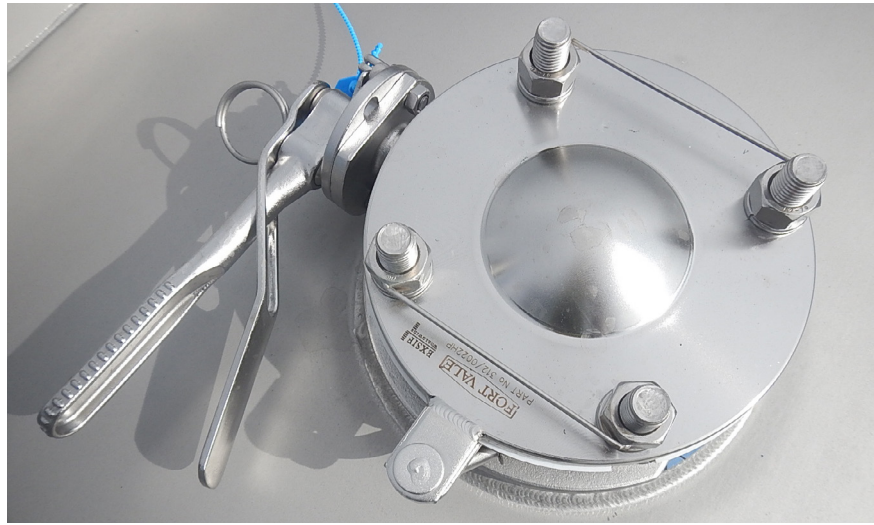


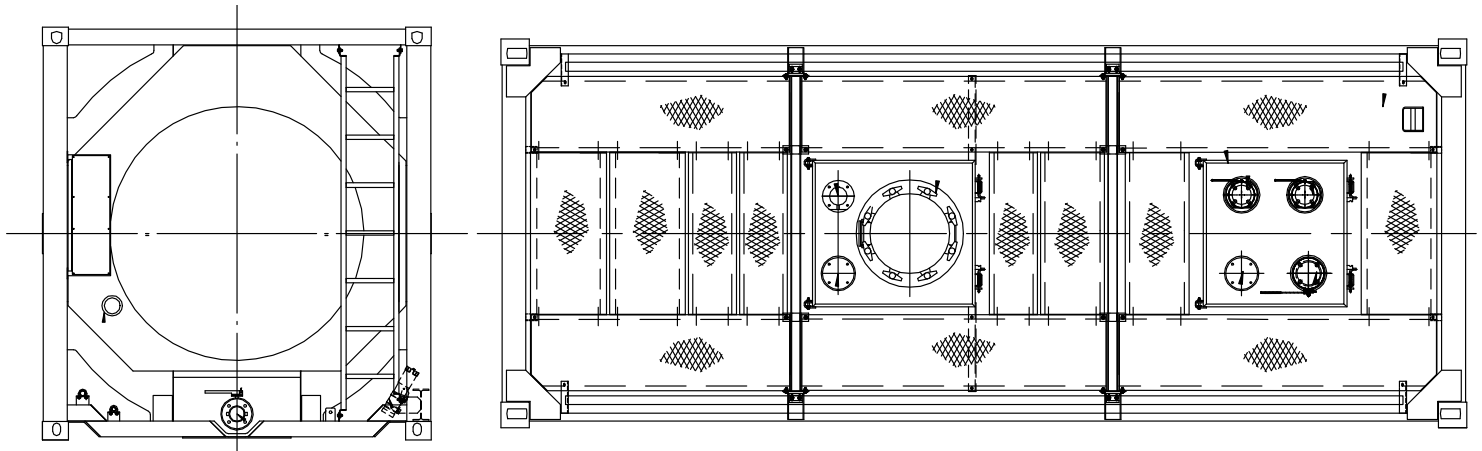
EXSIF

A Marmon | Berkshire Hathaway Company

Chemco Specification Tank Container

EXSIF provides a chemco specification tank container in both T11 and T14 codes, with enhanced features for the chemical industry. Standard safety design for these tanks include a full walkway and handrails on both the left and right hand side. This configuration has a top outlet assembly with a DN80 ball valve, blind flange, siphon tube for discharge, as well as additional ports. Versatile and fully approved for operations worldwide for all types of intermodal transport, our chemco containers are insulated and fitted with steam heating capability. We use the highest quality valves and accessories and exceed regulatory requirements for shell thickness.





Chemco Specification Tank Container

DIMENSIONS mm ft-in

Length	6,058	20' 0"
Width	2,438	8' 0"
Height	2,591	8' 6"

CAPACITIES

Capacity Liter	21,000	24,000	25,000	26,000
Capacity US Gallons	5,548	6,341	6,604	6,868
Tare kgs	3,600	3,720	3,770	3810
Tare lbs	7,937	8,201	8,311	8400
Max Payload kgs	32,400	32,280	32,230	32,190
Max Payload lbs	71,430	71,165	71,055	70,967

Shell Material	316 STST 1.4402/1.4404
Barrel/Head Thickness	4.6/4.5 (Minimum 0.2mm Corrosion allowance)

PRESSURES

Working	4.0 bar / 58.0 psi
Test	6.0 bar/ 87.0 psi
Vacuum	0.41 bar / 5.95 psi

Shell Material	ASME VIII/ EN14025 (Where applicable)
Vessel Design Temp	Min -40°C Max +140°C/ Min -40°F Max 284°F
Design Code	ASME VIII/ EN14025 (Where applicable)
Frame Finish	3 Coat system with zinc rich primer
Internal vessel Finish	Cold rolled ASTM 2B, interior acid cleaned and certified for the carriage of foodstuffs

FITTINGS T11

Manlid Fort Vale 500mm hinged manway with 8 point swingbolt fixing

Gasket PTFE outer envelope with EPDM inner core

Airline 3" to 2" Ball valve and blind flange

Bottom Outlet 3" 45° Fort Vale Univalve with 3" BSP termination. Including remote closure and fusible link

N/A

Top Outlet DN80 ball valve, blind flange and siphon tube

Spare Connection #1 3" to 2" Ball valve and blind flange

Spare Connection #2 3" low profile tank pad and blind flange

Safety Relief Valve 82.5mm flanged Fort Vale Supermaxi relief valve set at 4.4 bar (63.8 psi)

Bursting Disc N/A Set at 4.84 bar

Thermometer Surface type gauge reading, -40°C to +160°C (-40°F/+320°F)

Steam Heating 10 run steam heating with 12m² effective heating area. 4 bar (58 psi) working pressure with 1" BSP inlet and 3/4" BSP outlet connections

Walkway Full walkway

Handrail Installed on left and right side

Insulation & cladding 50mm Rockwool with GRP overlap cladding

Approvals	UN Portable tank (T11)	UN Portable tank (T14)
	IMDG, CFR49,ADR/RID L4BN, UIC, TIR, CSC, TC	IMDG, CFR49,ADR/RID L4BH, UIC, TIR, CSC, TC

Options Capacities from 17,500 litres (4623 USG), baffles, ground operated equipment, temperature controlled refrigeration and heating systems, super-insulation, telemetry, linings, alternative valve and connection possibilities