

# EXSIF

A Marmon | Berkshire Hathaway Company

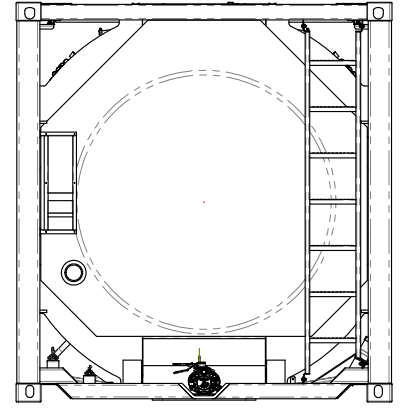
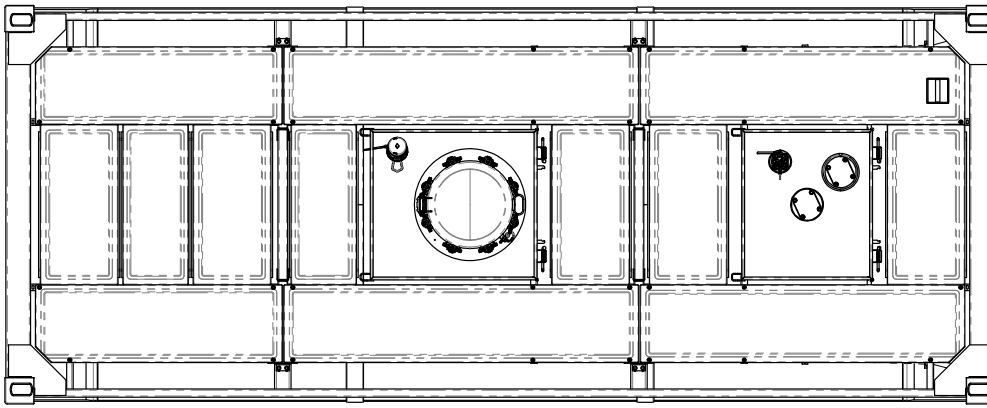
## Standard Tank Container

### Food Grade or Chemical

EXSIF provides a range of versatile standard UN Portable Tanks with capacities ranging from 17,500 to 26,000 liters for hazardous, non-hazardous and food grade cargos.

Versatile and fully approved for operations worldwide for all types of intermodal transport. Our standard tank containers are insulated and fitted with steam heating capability. We use the highest quality valves and accessories and exceed regulatory requirements for shell thickness.





# Standard Tank Container

## Food Grade or Chemical

DIMENSIONS	mm	ft-in	
<b>Length</b>	6,058	43' -2"	20' 0"
<b>Width</b>	2,438	16"	8' 0"
<b>Height</b>	2,591	16"	8' 6"

### CAPACITIES

<b>Capacity Liter</b>	21,000	24,000	25,000	26,000
<b>Capacity US Gallons</b>	5,548	6,341	6,604	6,868
<b>Tare kgs</b>	3,520	3,620	3,650	3700
<b>Tare lbs</b>	7,760	7,981	8,047	8,157
<b>Max Payload kgs</b>	32,480	32,380	32,350	32,300
<b>Max Payload lbs</b>	71,606	71,386	71,320	71,210

<b>Shell Material</b>	316 STST 1.4402/1.4404
<b>Barrel/Head Thickness</b>	4.6/4.5 (Minimum 0.2mm Corrosion allowance)

### PRESSURES

<b>Working</b>	4.0 bar / 58.0 psi
<b>Test</b>	6.0 bar/ 87.0 psi
<b>Vacuum</b>	0.41 bar / 5.95 psi

<b>Shell Material</b>	ASME VIII/ EN14025 (Where applicable)
<b>Vessel Design Temp</b>	Min -40°C Max +140°C/ Min -40°F Max 284°F
<b>Design Code</b>	ASME VIII/ EN14025 (Where applicable)
<b>Frame Finish</b>	3 Coat system with zinc rich primer
<b>Internal vessel Finish</b>	Cold rolled ASTM 2B, interior acid cleaned and certified for the carriage of foodstuffs

### FITTINGS

<b>Manlid</b>	Fort Vale 500mm hinged manway with 8 point swingbolt fixing
<b>Airlines</b>	1.5" Fort Vale stainless steel ball valve with 1.5" BSP termination
<b>Bottom Outlet</b>	3" 45° Fort Vale Univalve with 3" BSP termination. Including remote closure and fusible link
<b>Top Outlet</b>	Fort Vale 500mm hinged manway with 8 point swingbolt fixing
<b>Spare Connection</b>	1.5" Fort Vale stainless steel ball valve with 1.5" BSP termination
<b>Safety Relief Valve</b>	3" 45° Fort Vale Univalve with 3" BSP termination. Including remote closure and fusible link
<b>Thermometer</b>	3" Nominal bore dual drilled tank pad with blanking flange
<b>Steam Heating System</b>	3" Nominal bore dual drilled tank pad with blanking flange
<b>Walkway</b>	82.5mm flanged Fort Vale Supermaxi relief valve set at 4.4 bar (63.8 psi)
<b>Insulation</b>	Surface type gauge reading, -40°C to +160°C (-40°F/+320°F)
<b>Approvals</b>	10 run steam heating with 12m² effective heating area. 4 bar (58 psi) working pressure with 1" BSP inlet and 3/4" BSP outlet connections
<b>Options</b>	Capacities starting at 17,t00 liters Baffles Collapsible handrails and ground operated equipment Temperature controlled refrigeration and heating systems Superinsulation Telemetry Special linings Alternative valve and connection possibilities