

EXSIF

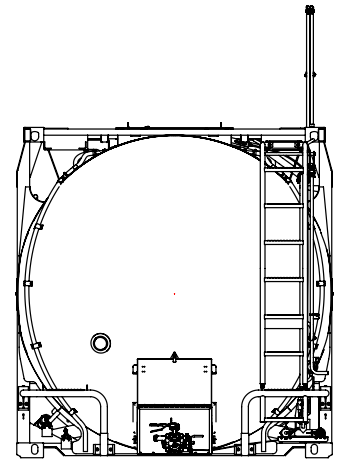
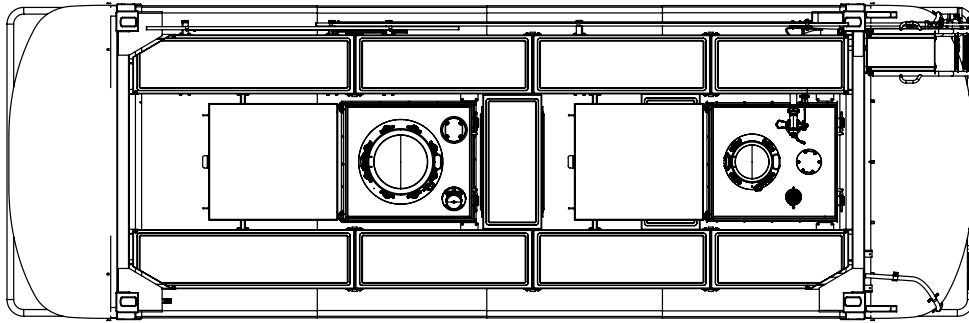
A Marmon | Berkshire Hathaway Company

Swap Body Tank Container

Food Grade or Chemical

Swap Body Tank Containers are designed for road, rail, and short sea (ferry) transport in specific markets. The Swap Body design offers larger tank capacities than standard ISO Tank Containers, increasing storage capacity and lowering overall supply chain costs. EXSIF's Swap Body tanks are lightweight and built with standard safety features such as ground operated handrails, full walkways, and multiple loading and discharge connections.





Swap Body Tank Containers

Food Grade or Chemical

DIMENSIONS	31,000	35,000
Length	MM 7,150 Ft-in 23' 5"	MM 7,820 Ft-in 25' 8"
Width	MM 2,550	Ft-in 8' 4"
Height	MM 2,670	Ft-in 8' 9"

FITTINGS

Manlid Fort Vale 500mm hinged manway with 8 point swingbolt fixing

Cleaning Hatch 3 x Fort Vale 300mm hinged manways with 4 point swingbolt fixing

Ground operated airline Fort Vale 2" butterfly valve with T-piece. Piped to ground level with dual 1.5" BSP & 2" BSP outlet and remote operation.

Top airline valve 1.5" Fort Vale stainless steel ball valve with 1.5" BSP termination

Bottom Outlet Fort Vale 3" 45° Cleanflow footvalve with 3" BSP termination

Top Outlet 3" Nominal bore dual drilled tank pad with blanking flange

Spare Connection 3" Nominal bore dual drilled tank pad with blanking flange

Safety Relief Valve 82.5mm flanged Fort Vale Supermaxi relief valve set at 4.4 bar (63.8 psi)

Thermometer Surface type gauge reading, -40°C to +160°C (-40°F/+320°F)

CAPACITIES	31,000	35,000
Capacity Liter	31,000	35,000
Capacity US Gallons	8,189	9,246
Tare kgs	3,770	3890
Tare lbs	8,311	8576
Max Payload kgs	35,230	35,110
Max Payload lbs	77,669	77,404

Shell Material 316L stst /1.4402

Barrel/Head Thickness 4.3mm/4.6mm

PRESSURES

Working 4.0 bar / 58.0 psi

Test 6.0 bar/ 87.0 psi

Vacuum 0.41 bar / 5.95 psi

Design Temp Min -40°C Max +150°C/ Min -40°F Max 302°F

Design Code ASME VIII/ EN14025 (Where applicable)

External Finish 3 Coat system with zinc rich primer

Internal Finish Cold rolled ASTM 2B, interior acid cleaned and certified for the carriage of foodstuffs

Steam and Glycol Heating System 10 run steam heating with 12m² effective heating area. 4 bar (58 psi) working pressure with 1" BSP inlet and 1" BSP outlet connections

Walkway Full walkway and collapsible handrail

Insulation 31 CBM/35CBM 150mm Glaswool/50mm Glasswool

Approvals UN Portable tank T11 IMDG, CFR49, RID/ADR L4BN, CSC, UIC,TIR,CCC

Options 29,000L- 35,000 litre capacities, temperature control, telemetry.