

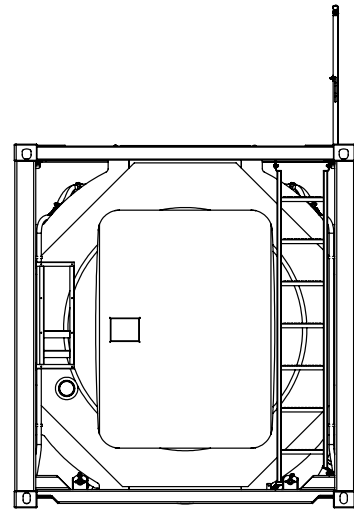
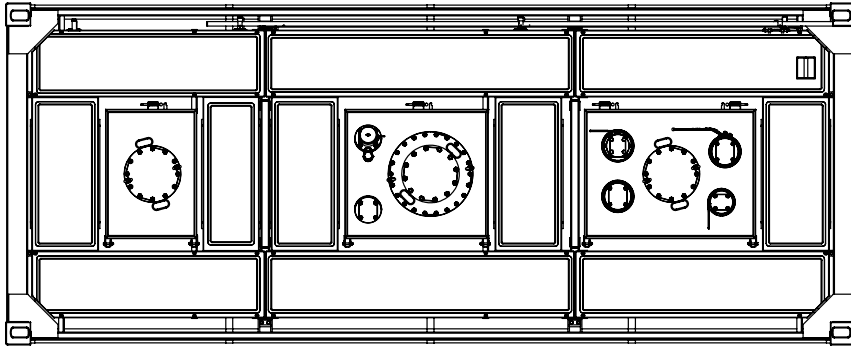
# EXSIF

A Marmon | Berkshire Hathaway Company

## T22 Hazardous Liquid Tank Container

The T22 tanks are used for the most highly hazardous classes of products, such as those which are toxic by inhalation, highly reactive or flammable. They are ASME U stamped as standard and insulated in accordance with TP38 to meet US DOT 49 CFR requirements. Designed and fully approved for operation worldwide via all methods of intermodal transport. Installed with fully welded 'V' type baffles. We use the highest quality valves and accessories and exceed regulatory requirements for shell thickness. The tanks can be supplied with linings, temperature control, GPS and approved for ASME lethal service.





# T22 Hazardous Liquid Tank Container

## DIMENSIONS mm ft-in

<b>Length</b>	6,058	20' 0"
<b>Width</b>	2,438	8' 0"
<b>Height</b>	2,591	8' 6"

## CAPACITIES

<b>Capacity Liter</b>	22,500
<b>Capacity US Gallons</b>	5,944

<b>Shell Material</b>	316 STST 1.4402
<b>Barrel/Head Thickness</b>	9.0mm

## PRESSURES

<b>Working</b>	6.67bar / 96.7 psi
<b>Test</b>	10.0bar / 145.0 psi
<b>Vacuum</b>	1.0bar / 14.5 psi

<b>Design Temp</b>	Min -40°C Max +140°C/ Min -40°F Max 284°F
--------------------	---

<b>Design Code</b>	ASME VIII/ EN14025 (Where applicable)
--------------------	---------------------------------------

<b>External Finish</b>	3 Coat system with zinc rich primer
------------------------	-------------------------------------

<b>Internal Finish</b>	Hot rolled, No. 1D Finish. Chemically cleaned.
------------------------	--

## WEIGHTS

<b>Tare kgs</b>	5,935
<b>Tare lbs</b>	13,084

<b>Max Payload kgs</b>	30,065
------------------------	--------

<b>Max Payload lbs</b>	66,282
------------------------	--------

## FITTINGS

<b>Manlid</b>	500mm, bolted blank flange with 22 bolt fixings with integrated 300mm cleaning port
---------------	---

<b>Airlines</b>	DN50 flanged ball valve
-----------------	-------------------------

<b>Vapor Return</b>	DN50 flanged ball valve
---------------------	-------------------------

<b>Top Outlet</b>	DN80 flanged ball valve
-------------------	-------------------------

<b>Top Fill</b>	DN80 provision
-----------------	----------------

<b>Cleaning Ports</b>	300mm cleaning ports between baffles
-----------------------	--------------------------------------

<b>Safety Relief Valve</b>	82.5mm flanged Fort Vale Supermaxi relief valve set at 7.31 bar
----------------------------	---

<b>Thermometer</b>	Surface type gauge reading, -40°C to +160°C (-40°F/+320°F)
--------------------	--

<b>Baffles</b>	2 sets of fully welded V-type baffles
----------------	---------------------------------------

<b>Steam Heating System</b>	8 run system producing an effective heating area of 10 m <sup>2</sup> , 6 bar (87 psi) working pressure with 1" BSP inlet and 3/4" BSP outlet connections
-----------------------------	---

<b>Walkway</b>	Full walkway with collapsible handrail installed on righthand side
----------------	--

<b>Insulation</b>	105mm Rockwool insulation with GRP cladding
-------------------	---

<b>Options</b>	Alternative capacities from 14,500 litres to 25,000 litres, Linings, Super-insulation, Telemetry, Temperature control, Exotic shell materials
----------------	---

<b>Approvals</b>	UN Portable tank (T22) IMDG, CFR49, RID/ ADR-L10DH, UIC, TIR, CSC, ASME U
------------------	---