

EXSIF

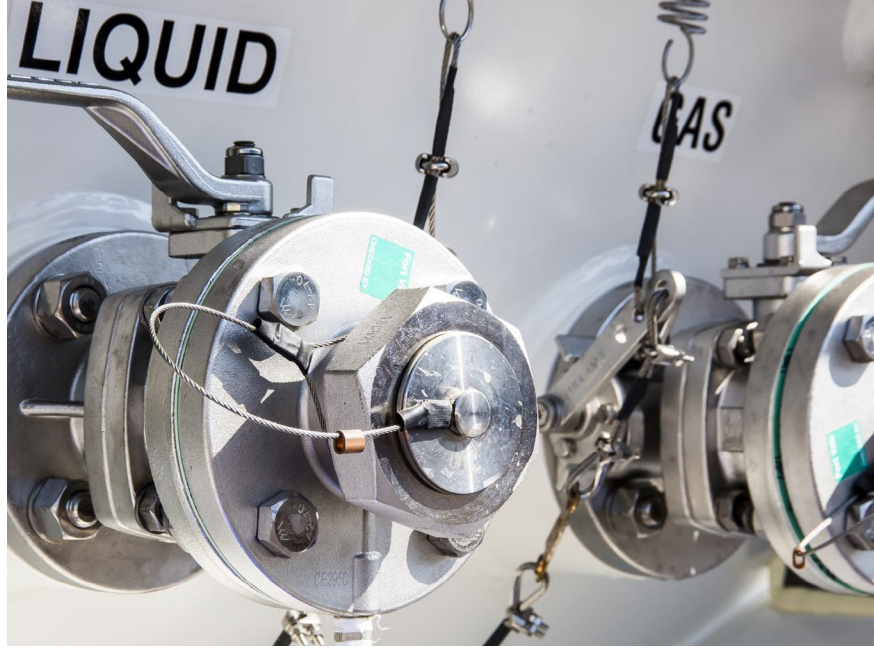
A Marmon | Berkshire Hathaway Company

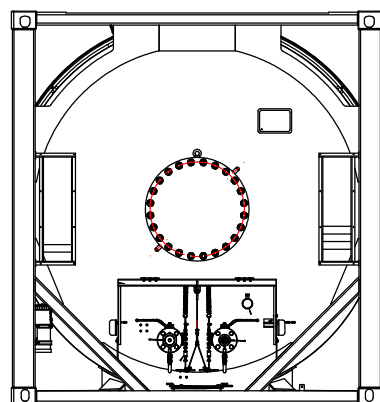
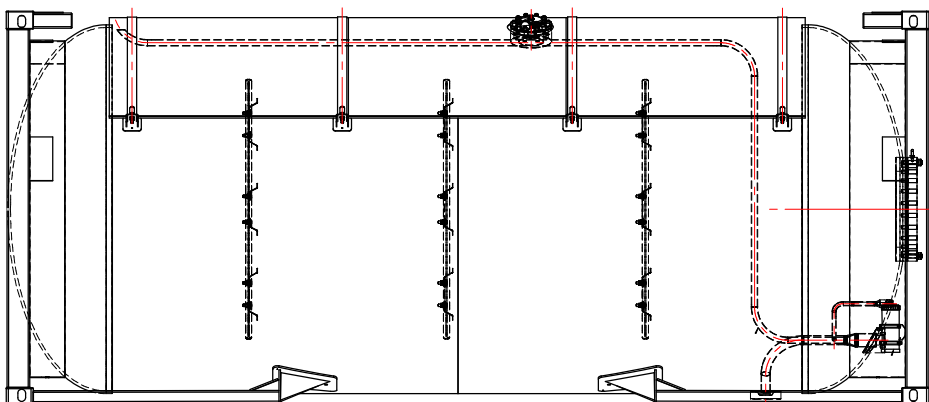
T50 Gas Tank Container

EXSIF offers a large fleet of specialized gas tank containers used to store and transport compressed liquified gasses. In addition to refrigerant, pharmaceutical, and liquid petroleum gasses, we also carry tanks to transport a variety of specific gasses:

- Ammonia
- Methyl Chloride
- Sulfur Dioxide
- Anhydrous Hydrogen Fluoride
- Propylene Oxide

Our equipment is designed to exceed regulatory requirements required for highly regulated gas products. There are a wide range of capacities and pressure ratings that are ASME U Stamped equipment standard. We can meet regional or product specific requirements and use only the highest quality valves and fittings. EXSIF has the technical expertise to help you with the requirements for your gas tank needs.





T50 Gas Tank Container

DIMENSIONS			FITTINGS		Pressure Gauge	
	mm	ft-in				0-40 bar
Length	6,058	20' 0"	Manlid	500mm bolted manlid in rear dome	Thermometer	-60°C to +100°C
Width	2,438	8' 0"		2" Fort Vale stainless steel butterfly valve with a 2" BSP termination	Valve	Valve compartment complete with lockable and sealable door
Height	2,591	8' 6"			Compartment	
CAPACITY			Liquid Line Fitting		Gaskets	Spiral wound PTFE/SS or solid PTFE
	Litres	Gallons		DN50 (2") Internal valve with DN50 (2") ball valve, terminating with 3 1/4" ACME outlet	Baffles	3 sets of stainless steel baffles
	24,300	6,419			Volume Gauge	Provision
	24,600	6,500			Insulation	Sunshield covering top third of tank
WEIGHTS			Gas phase fittings		Approvals	RID, ADR, IMDG T 50, US DOT CFR49 with special permit, ISO 1496/3, UIC 592, CSC, TC and TIR
	kgs	lbs		DN50 (2") Internal valve with DN50 (2") ball valve, terminating with 1 3/4" ACME outlet	Other capacities	16,000 Litres / 4227 US Gallons
Tare	8,820	19,444	Remote closure system	Internal valves complete with stainless steel cable and fusible link for automatic shutdown in the event of fire	Other Working Pressures	34.5 barg / 500 psig
	7,480	16,490			Gases	Refrigerants, LPG, pharmaceutical grade propellants, Ammonia, Sulfur dioxide, anhydrous hydrogen fluoride, propylene oxide
Max Payload	27,180	59,921			Options	Telemetry
	28,520	62,875				Level gauges
PRESSURES			Shell Material			Alternative shell materials
		lbs		Carbon Steel P460 NL1		Wide variety of valve work and discharge connections
UN Portable Working	34.5barg	27.5barg	Barrel/Head Thickness	18.2/17.2mm		
	500 psig	399 psig		14.6/13.5mm		
US DOT Working	31.4barg	25.0barg	Design Temp	130°C (266°F)		
	455 psig	363psig	Design Code	ASME VIII Div. 2 with ASME U2-Stamp, AD 2000-Merkblatt		
MITI Test	57.6barg	45.8barg	External Finish	3 coat system with zinc rich primer		
	835 psig	664 psig				
Reference temperature	-40°C to + 55°C					
	-40°F to 131°F					